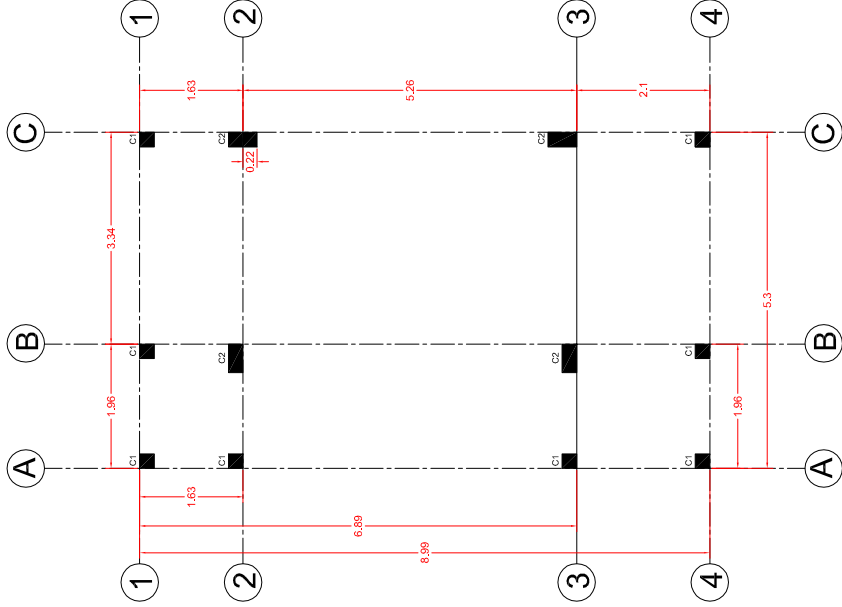


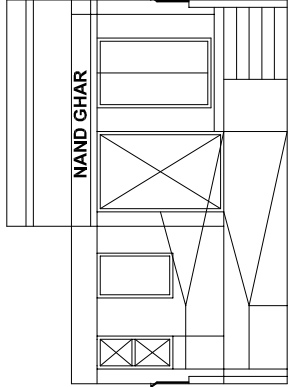
PLAN



COLUMN CENTRE LINE PLAN

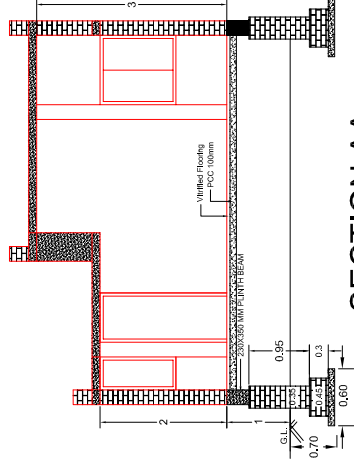
Schedule of Doors & Windows		
Description	Dimension (M)	Nos.
Door (D1)	1.20m x 2.10m	1
Door (D2)	0.75m x 2.00m	1
Door (D3)	0.75m x 2.00m	1
Window (W1)	1.10m x 1.80m	1
Window (W2)	1.10m x 1.20m	1
Window (W3)	1.00m x 1.20m	2
Window (W4)	0.52m x 1.20m	2
Ventilation (V1)	0.30m x 0.30m	1
Ventilation (V2)	0.60m x 0.60m	1
Ventilation (V3) Above Lintel	0.75m x 0.55m	4

GOVERNMENT OF GUJARAT ROADS & BUILDINGS DEPARTMENT		
DRG. NO.	Name of Work :- Construction of Anganvadi - Nand Ghar (Frame structure) at Village- Mandavdhar-4 Tal. Gadhada Dist. Botad	
DATE	SCALE NTS	
DRAWN BY	CHIEF ENGINEER & A.S. (PAN) R&B DEPT. GUJ. STATE GANDHINAGAR	
CHECKED BY	SUPERINTENDING ENGINEER PANCHAYAT R&B CIRCLE-2 RAIKOT	
TRACED BY	EXECUTIVE ENGINEER PANCHAYAT R&B DIVISION BOTAD	
COMPARED BY	DEPUTY EXECUTIVE ENGINEER PAN. R&B SUB DIVISION BOTAD	
ACCOMPANIMENT TO		

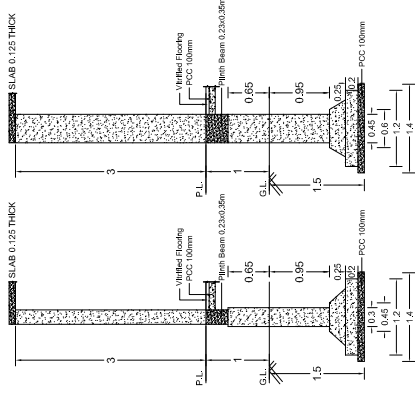


FRONT VIEW

- +4.425
- +4.125
- +4.00
- +3.40
- +3.10
- +3.00
- +1.00
- +0.80
- +0.60
- +0.40
- +0.20
- 0.00

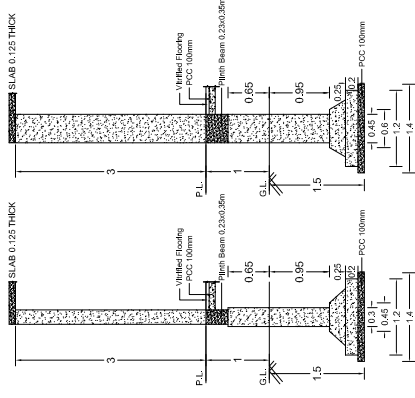


SECTION AA



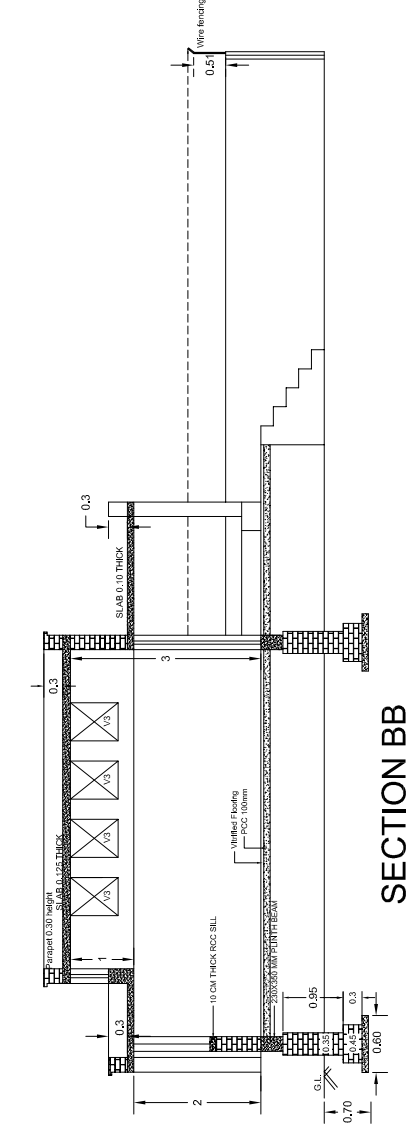
C1 Column

Foundation Section



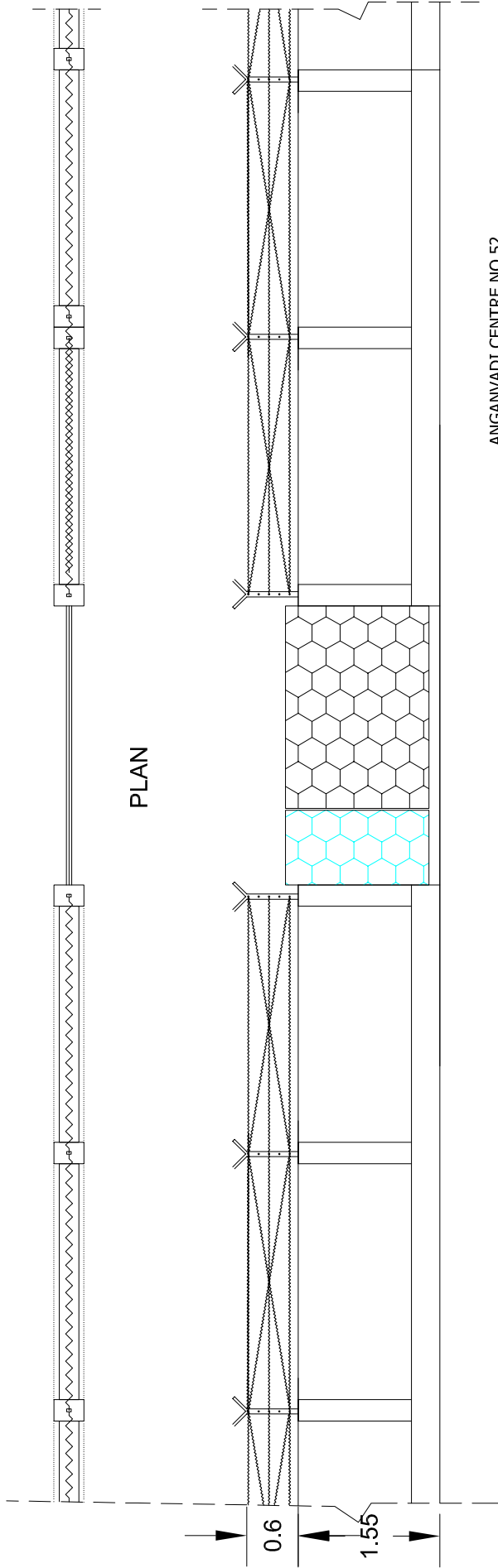
C2 Column

Foundation Section

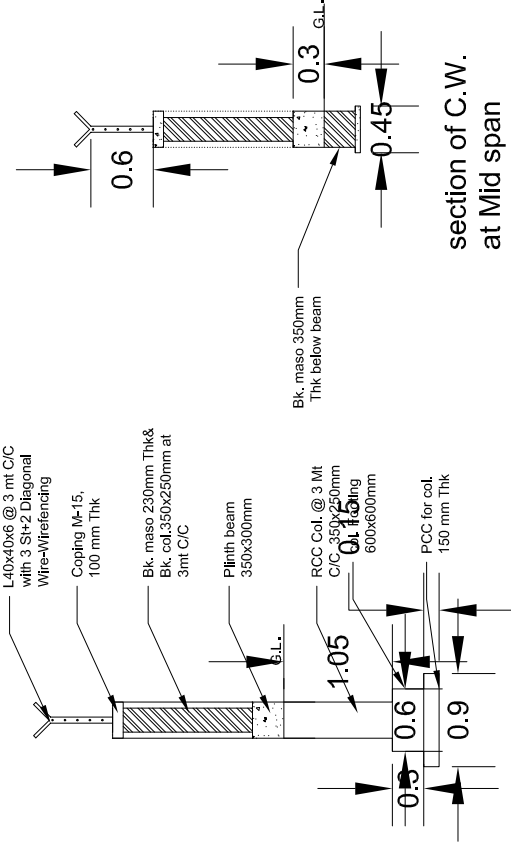


SECTION BB

GOVERNMENT OF GUJARAT			
ROADS & BUILDINGS DEPARTMENT		SCALE	
DRG. NO.	Name of Work :- Construction of Anganvadi - Nand Ghar (Frame structure) at Village- Mandavdhar-4 Tal. Gadhada Dist. Botad	NTS	
DATE			
DRAWN BY	CHIEF ENGINEER & A.S. (PAN) R&B DEPT. GUJ. STATE GANDHINAGAR		
CHECKED BY	SUPERINTENDING ENGINEER PANCHAYAT R&B CIRCLE-2 RAIKOT		
TRACED BY	EXECUTIVE ENGINEER PANCHAYAT R&B DIVISION BOTAD		
COMPARED BY	DEPUTY EXECUTIVE ENGINEER PAN. R&B SUB DIVISION BOTAD		
ACCOMPANIMENT TO			

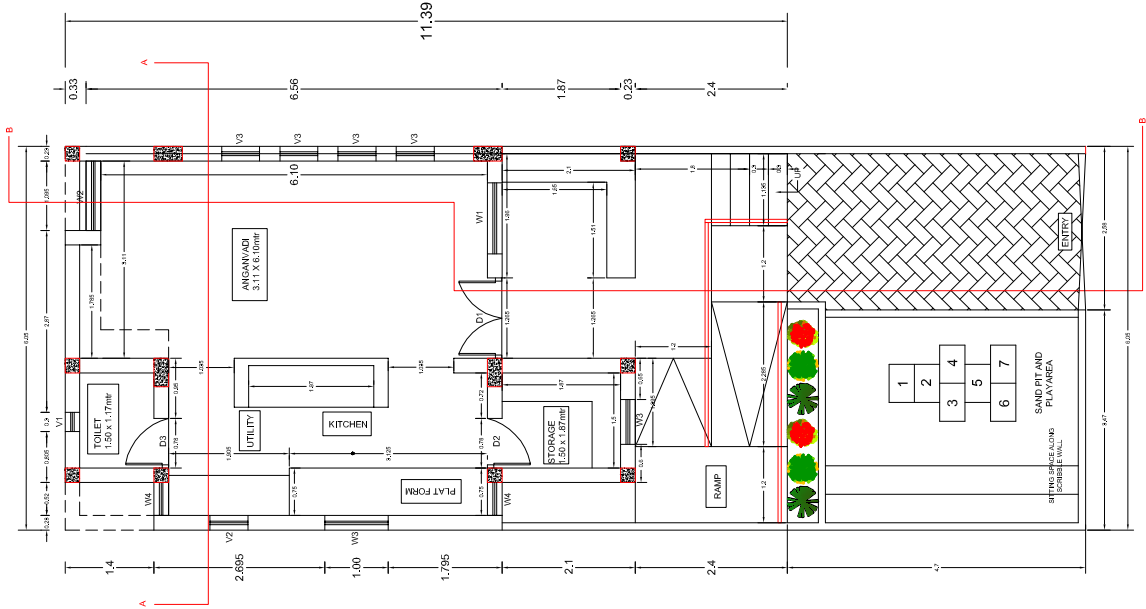


ELEVATION

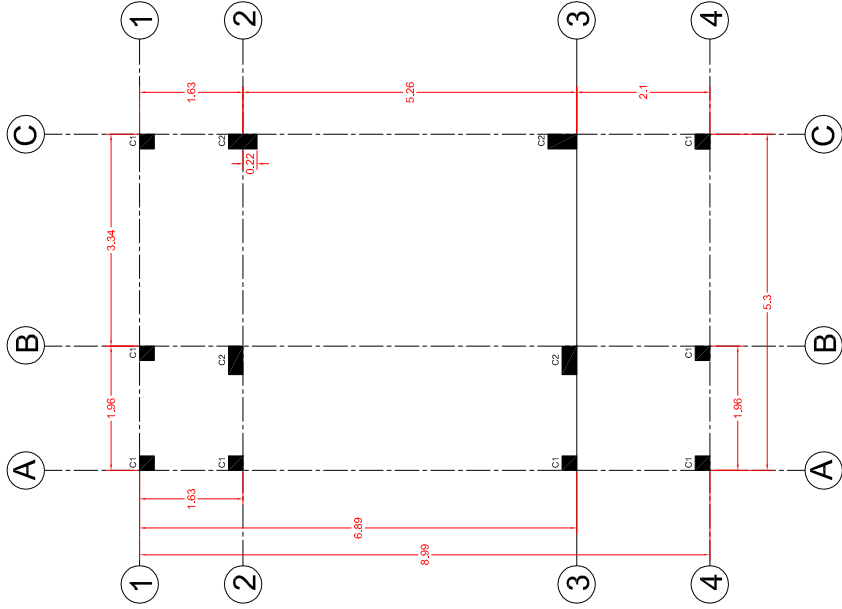


ANGANVADI CENTRE NO.52

GOVERNMENT OF GUJARAT ROADS & BUILDINGS DEPARTMENT			
DRG. NO.	Name of Work :- Construction of Anganvadi - Nand Ghar (Frame structure) at Village- Mandavdhar-4 Tal. Gadhada Dist. Botad		SCALE 1M = 0.5Mtr
DATE			
DRAWN BY	CHIEF ENGINEER & A.S. (PAN) R&B DEPT. GUJ. STATE GANDHINAGAR		
CHECKED BY	SUPERINTENDING ENGINEER PANCHAYAT R&B CIRCLE-2 RAJKOT		
TRACED BY	EXECUTIVE ENGINEER PANCHAYAT R&B DIVISION BOTAD		
COMPARED BY	DEPUTY EXECUTIVE ENGINEER PAN. R&B SUB DIVISION BOTAD		
ACCOMPANIMENT TO			



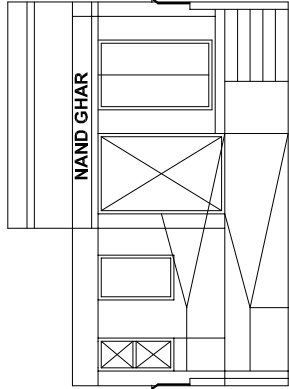
PLAN



COLUMN CENTRE LINE PLAN

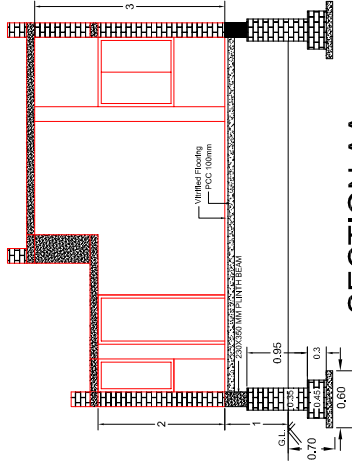
Schedule of Doors & Windows		
Description	Dimension (M)	Nos.
Door (D1)	1.20m x 2.10m	1
Door (D2)	0.75m x 2.00m	1
Door (D3)	0.75m x 2.00m	1
Window (W1)	1.10m x 1.80m	1
Window (W2)	1.10m x 1.20m	1
Window (W3)	1.00m x 1.20m	2
Window (W4)	0.52m x 1.20m	2
Ventilation (V1)	0.30m x 0.30m	1
Ventilation (V2)	0.60m x 0.60m	1
Ventilation (V3) Above Lintel	0.75m x 0.55m	4

GOVERNMENT OF GUJARAT ROADS & BUILDINGS DEPARTMENT		
DRG. NO.	Name of Work :- Construction of Anganvadi - Nand Ghar (Frame structure) at Village- Limbali Tal. Gadhada Dist. Botad	
DATE	SCALE NTS	
DRAWN BY	CHIEF ENGINEER & A.S. (PAN) R&B DEPT. GUJ. STATE GANDHINAGAR	
CHECKED BY	SUPERINTENDING ENGINEER PANCHAYAT R&B CIRCLE-2 RAIKOT	
TRACED BY	EXECUTIVE ENGINEER PANCHAYAT R&B DIVISION BOTAD	
COMPARED BY	DEPUTY EXECUTIVE ENGINEER PAN. R&B SUB DIVISION BOTAD	
ACCOMPANIMENT TO		

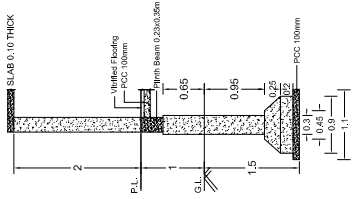


FRONT VIEW

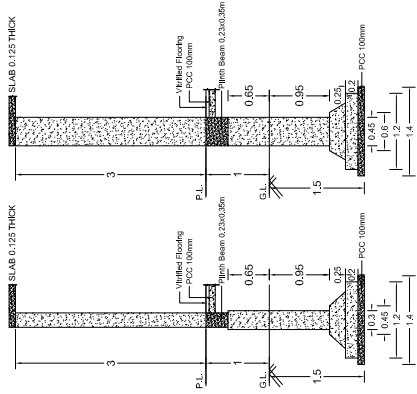
- +4.425
- +4.125
- +4.00
- +3.40
- +3.10
- +3.00
- +1.00
- +0.80
- +0.60
- +0.40
- +0.20
- 0.00



SECTION AA



C1 Column

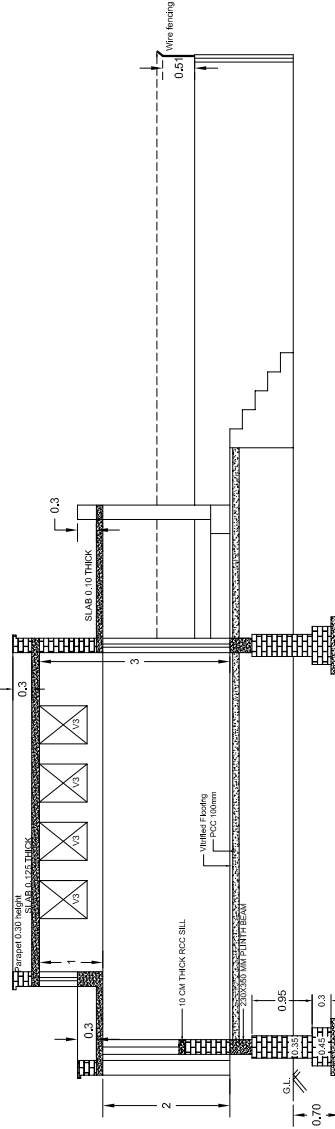


C2 Column

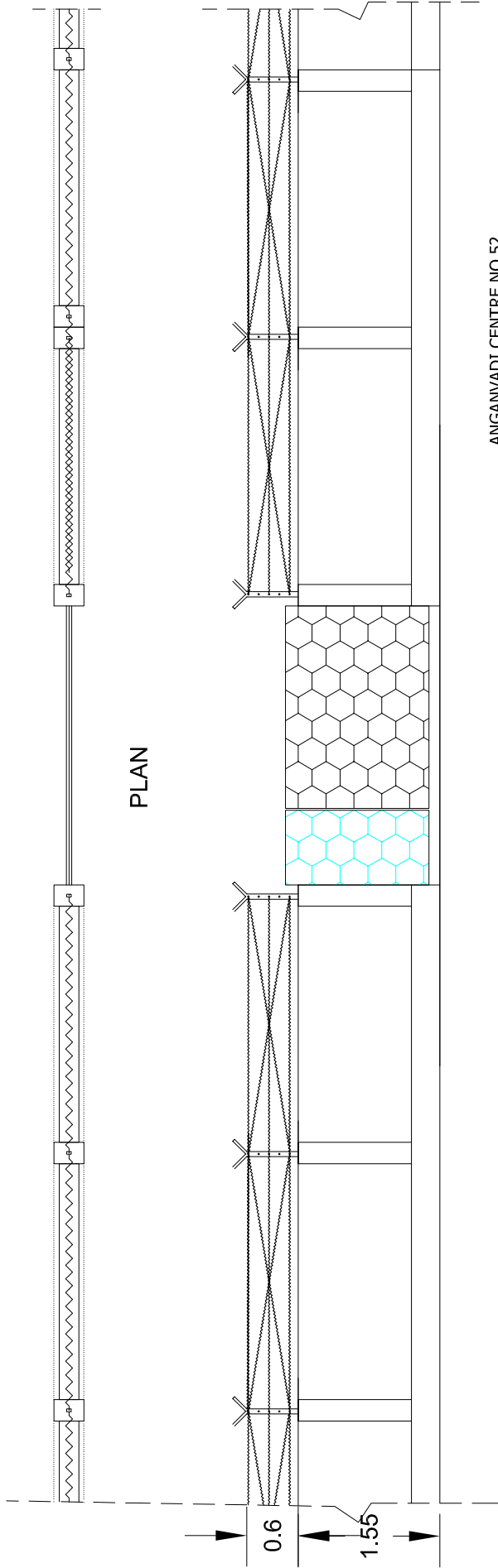
Foundation Section

Foundation Section

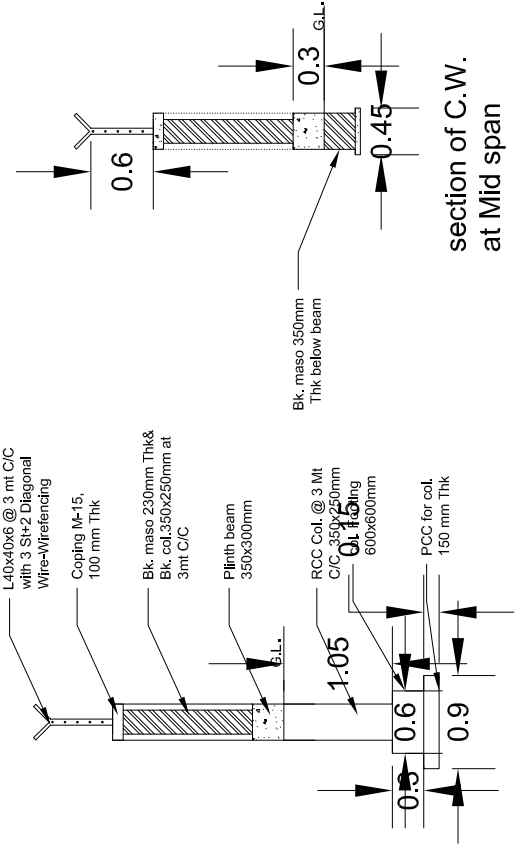
GOVERNMENT OF GUJARAT			
ROADS & BUILDINGS DEPARTMENT			SCALE
	Name of Work :- Construction of Anganvadi - Nand Ghar (Frame structure) at Village- Limbali Tal. Gadhada Dist. Botad		NTS
DRG. NO.		CHIEF ENGINEER & A.S. (PAN) R&B DEPT. GUJ. STATE GANDHINAGAR	
DATE			
DRAWN BY		SUPERINTENDING ENGINEER PANCHAYAT R&B CIRCLE-2 RAJKOT	
CHECKED BY		EXECUTIVE ENGINEER PANCHAYAT R&B DIVISION BOTAD	
TRACED BY		DEPUTY EXECUTIVE ENGINEER PAN. R&B SUB DIVISION BOTAD	
COMPARED BY			
ACCOMPANIMENT TO			



SECTION BB



ELEVATION

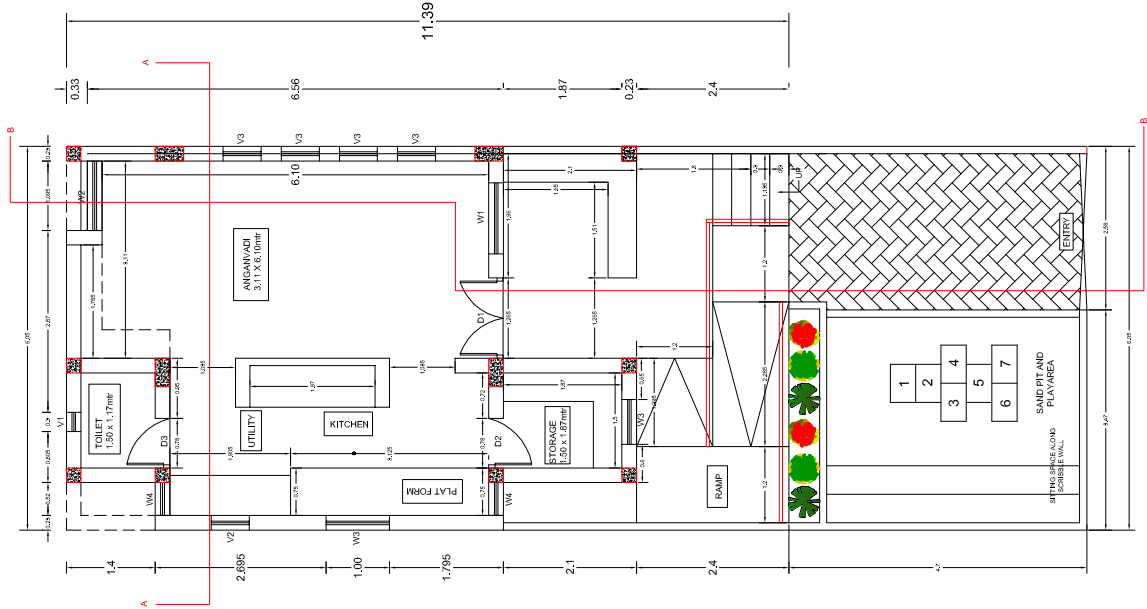


section of C.W. at Column

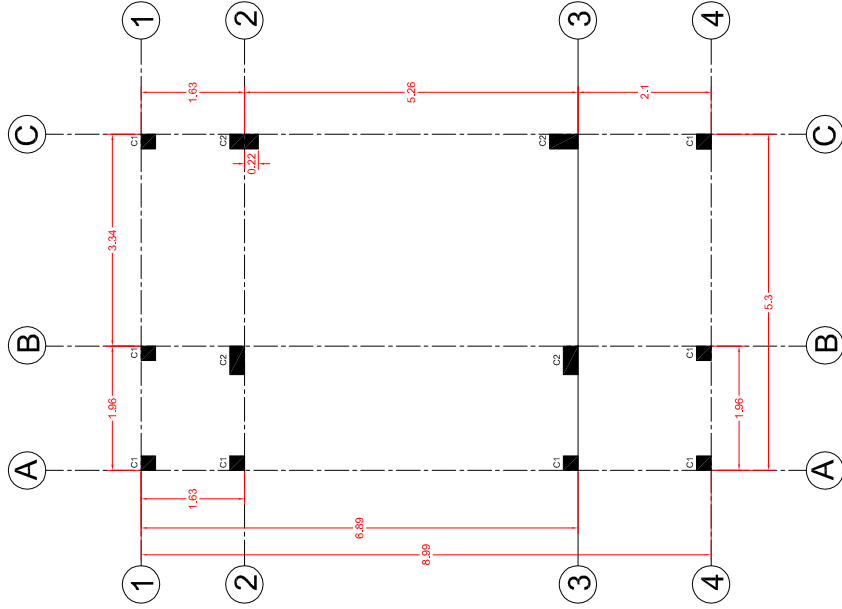
section of C.W.  
at Mid span

ANGANVADI CENTRE NO.52

GOVERNMENT OF GUJARAT ROADS & BUILDINGS DEPARTMENT			
DRG. NO.	Name of Work :- Construction of Anganvadi - Nand Ghar (Frame structure) at Village- Limball Tal. Gadhada Dist. Botad		SCALE 1M = 0.5Mtr
DATE			
DRAWN BY	CHIEF ENGINEER & A.S. (PAN) R&B DEPT. GUJ. STATE GANDHINAGAR		
CHECKED BY	SUPERINTENDING ENGINEER PANCHAYAT R&B CIRCLE-2 RAJKOT		
TRACED BY	EXECUTIVE ENGINEER PANCHAYAT R&B DIVISION BOTAD		
COMPARED BY	DEPUTY EXECUTIVE ENGINEER PAN. R&B SUB DIVISION BOTAD		
ACCOMPANIMENT TO			



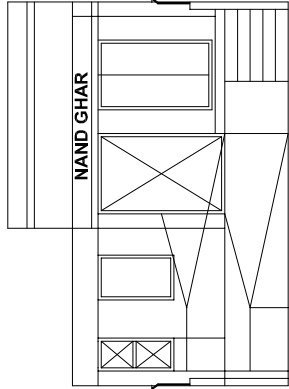
PLAN



COLUMN CENTRE LINE PLAN

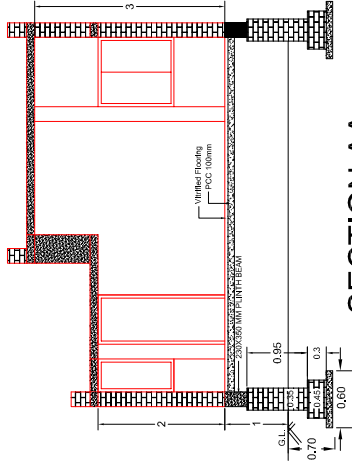
Schedule of Doors & Windows		
Description	Dimension (M)	Nos.
Door (D1)	1.20m x 2.10m	1
Door (D2)	0.75m x 2.00m	1
Door (D3)	0.75m x 2.00m	1
Window (W1)	1.10m x 1.80m	1
Window (W2)	1.10m x 1.20m	1
Window (W3)	1.00m x 1.20m	2
Window (W4)	0.52m x 1.20m	2
Ventilation (V1)	0.30m x 0.30m	1
Ventilation (V2)	0.60m x 0.60m	1
Ventilation (V3) Above Lintel	0.75m x 0.55m	4

GOVERNMENT OF GUJARAT ROADS & BUILDINGS DEPARTMENT		SCALE
DRG. NO.	Name of Work :- Construction of Anganvadi - Nand Ghar (Frame structure) at Village- Haripar-1 Tal. Gadhada Dist. Botad	NTS
DATE		
DRAWN BY	CHIEF ENGINEER & A.S. (PAN) R&B DEPT. GUJ. STATE GANDHINAGAR	
CHECKED BY	SUPERINTENDING ENGINEER PANCHAYAT R&B CIRCLE-2 RAJKOT	
TRACED BY	EXECUTIVE ENGINEER PANCHAYAT R&B DIVISION BOTAD	
COMPARED BY	DEPUTY EXECUTIVE ENGINEER PAN. R&B SUB DIVISION BOTAD	
ACCOMPANIMENT TO		

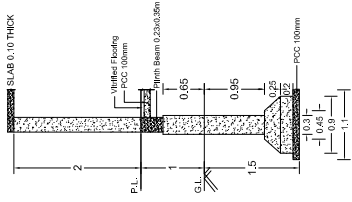


FRONT VIEW

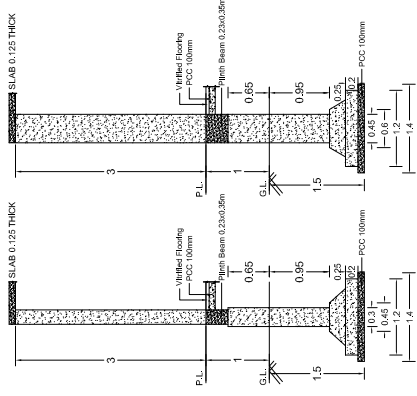
- +4.425
- +4.125
- +4.00
- +3.40
- +3.10
- +3.00
- +1.00
- +0.80
- +0.60
- +0.40
- +0.20
- 0.00



SECTION AA



C1 Column

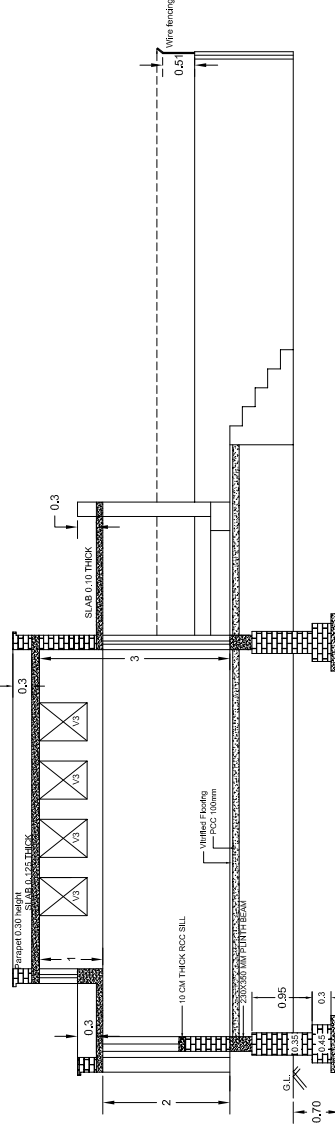


C2 Column

Foundation Section

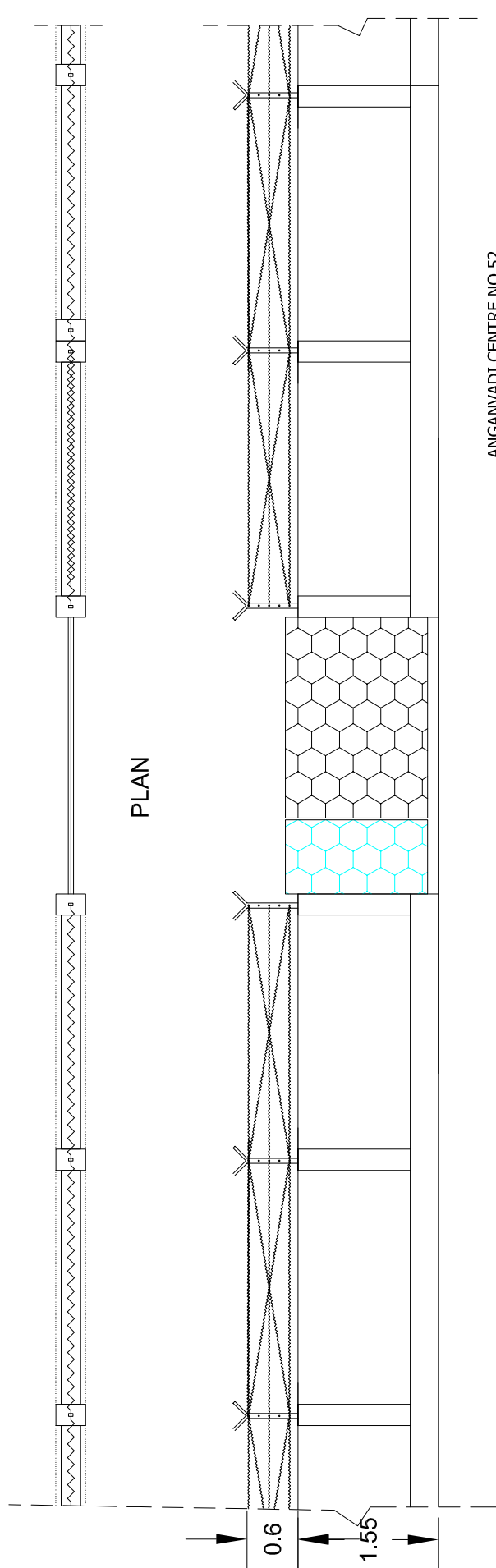
Foundation Section

GOVERNMENT OF GUJARAT			
ROADS & BUILDINGS DEPARTMENT		SCALE	
DRG. NO.	Name of Work :- Construction of Anganvadi - Nand Ghar (Frame structure) at Village- Haripar-1 Tal. Gadhada Dist. Botad	NTS	
DATE			
DRAWN BY	CHIEF ENGINEER & A.S. (PAN) R&B DEPT. GUJ. STATE GANDHINAGAR		
CHECKED BY	SUPERINTENDING ENGINEER PANCHAYAT R&B CIRCLE-2 RAIKOT		
TRACED BY	EXECUTIVE ENGINEER PANCHAYAT R&B DIVISION BOTAD		
COMPARED BY	DEPUTY EXECUTIVE ENGINEER PAN. R&B SUB DIVISION BOTAD		
ACCOMPANIMENT TO			

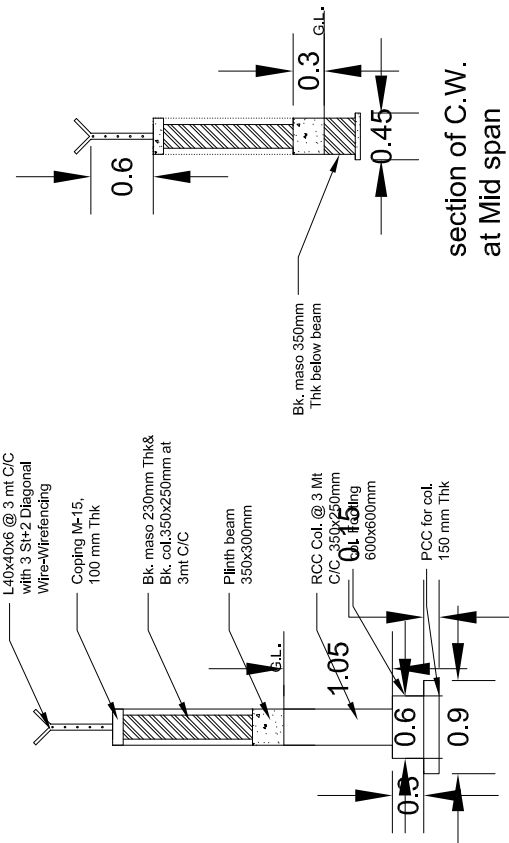


SECTION BB





ELEVATION



section of C.W. at Column

section of C.W. at Mid span

ANGANVADI CENTRE NO.52

GOVERNMENT OF GUJARAT ROADS & BUILDINGS DEPARTMENT			
DRG. NO.	Name of Work :- Construction of Anganvadi - Nand Ghar (Frame structure) at Village- Haripar-1 Tal. Gadhada Dist. Botad		SCALE 1M = 0.5Mtr
DATE			
DRAWN BY	CHIEF ENGINEER & A.S. (PAN) R&B DEPT. GUJ. STATE GANDHINAGAR		
CHECKED BY	SUPERINTENDING ENGINEER PANCHAYAT R&B CIRCLE-2 RAJKOT		
TRACED BY	EXECUTIVE ENGINEER PANCHAYAT R&B DIVISION BOTAD		
COMPARED BY	DEPUTY EXECUTIVE ENGINEER PAN. R&B SUB DIVISION BOTAD		
ACCOMPANIMENT TO			